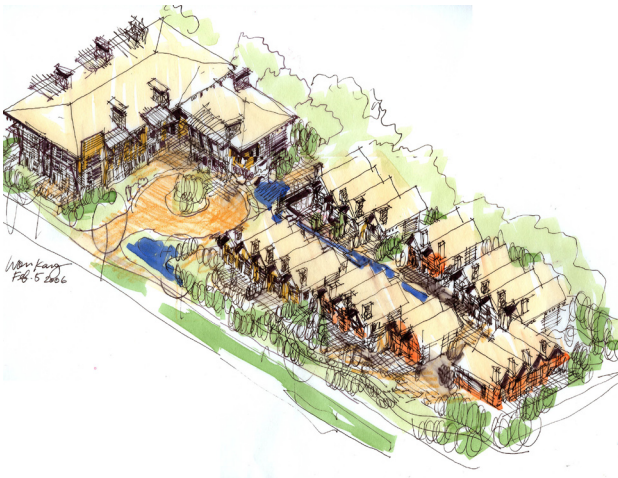




### Northlands Terrace

This is a great location that backs onto Northlands Golf Course and Thomas Creek. A full environmental assessment was done in developing the plans for 35 condominiums and 25 townhouses. The total project scope is approximately 80,000 sq.ft. and includes a public art component. The central theme was generated around a dry creek bed in the centre of the townhouse courtyard that directs water into a cistern for irrigation. This was supplemented with rain barrels, native vegetation and permeable pavers. A number of the condominium units were designed to be fully accessible as this is within scooter distance of the local mall and is on a major transit route.



**Location:** District of North Vancouver, B.C.