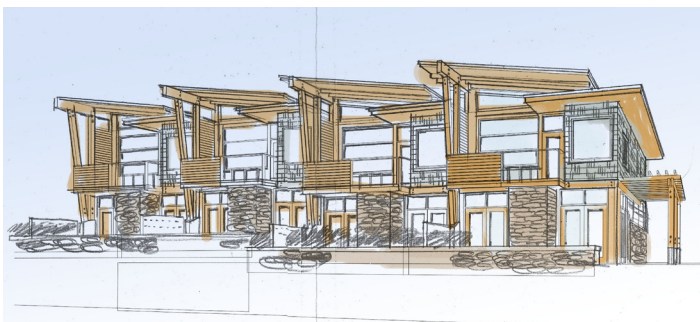
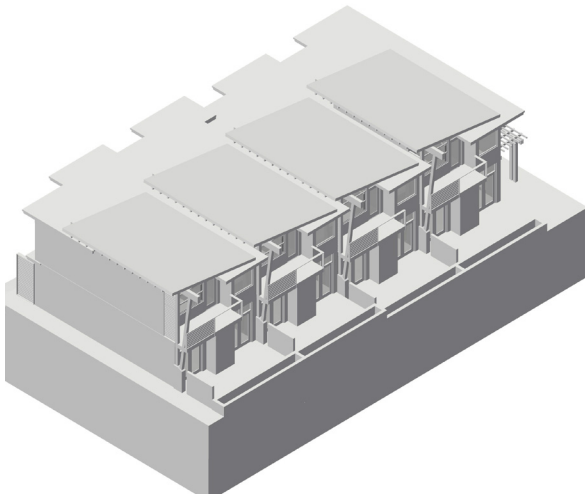




West Vancouver Townhouses

This is a very interesting site on the edge of Ambleside commercial / residential districts. The project was designed for families and has good access to schools, parks and transit. Many sustainable features have been incorporated such as geothermal heating. With the use of natural materials and timber detailing this will be a focal point at the entrance to Ambleside.



Location: Ambleside, West Vancouver, B.C.